

(Continued)

7 | Check Your Setup

Connect the Antenna to the antenna connector located on the side of the device.

If your device is connected and configured correctly, you will see the following LED Status:

COMM: Green (ON when port is open)
LINK: Green
POST: Green
POWER: Blue

LED	COLOR	AIRBORNE DEVICE STATE
POWER	Off	Adapter is not powered.
	Blue	Adapter is powered.
POST	Off	Adapter is not powered.
	Red	Adapter failed Power On Self Test ("POST") and is not configured for wireless communication.
	Amber	Adapter passed POST but is not configured for wireless network communication.
	Green	Adapter passed POST and is configured for wireless communication.
LINK	Off	Adapter is not powered.
	Red / Off	(Periodic Blinking) Adapter is searching for a valid network (Access Point) that matches device's configuration.
COMM	Green	Adapter has successfully associated with an Access Point.
	Off	If Power LED is also Off, then Adapter is not powered.
	Off	If Power LED is On then, No TCP session from WLAN or Ethernet interface has been established.
COMM	Green	A TCP connection to the adapter has been established from the Wireless or Ethernet interfaces but no traffic has been detected.

PIN	RS-232 (DTE) Port 1 & 2 (Default)	RS-422/485
1	No Connect	No Connect
2	RxD	RxD +
3	TxD	TxD +
4	No Connect	No Connect
5	GND	GND
6	No Connect	RxD -
7	RTS	No Connect
8	CTS	No Connect
9	No Connect	TxD -



Recommended Accessories

Model MDR-20-24
120VAC/5VDC Power Supply

or

Model PS-WDS
Power Supply with Appropriate
Cord (North America, EU, UK)

Serial Cables

Model C5UMB10FBG
Ethernet Cable



B+B SMARTWORX

Powered by **ADVANTECH**

1-888-948-2248 | Europe: +353 91 792444

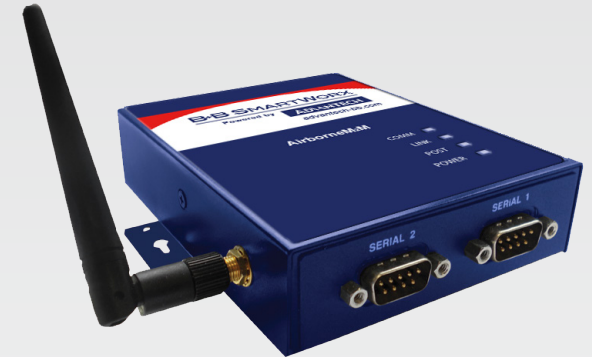
advantech-bb.com

707 Dayton Road | PO Box 1040 | Ottawa, IL 61350

Phone: 815-433-5100 | Fax: 815-433-5109

www.advantech-bb.com | E-mail: support@advantech-bb.com

+ QUICK START GUIDE



ABDN-SE-IN5410 & ABDN-SE-IN5420 Industrial Serial Device Server

**Before you begin, be
sure you have the following:**

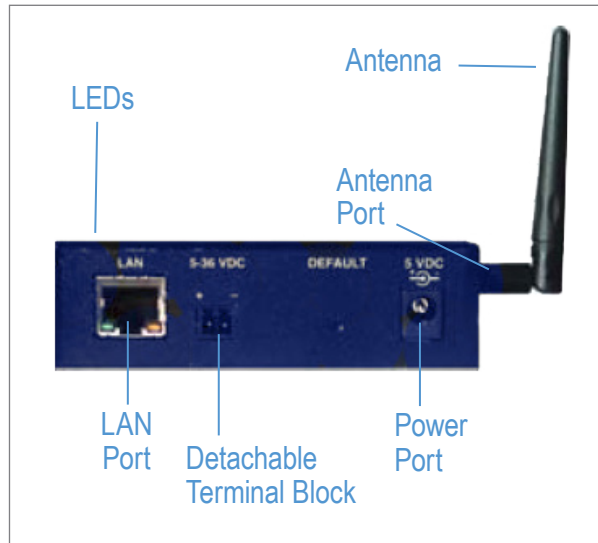
- + Industrial Serial Device Server (included)
- + CD with Airborne Management Center Software (included)
- + Antenna (included)
- + Power Supply (not included)
- + Ethernet Cable (not included)

B+B SMARTWORX

Powered by **ADVANTECH**

Fast and easy on the web: www.advantech-bb.com

Product Overview



1 Attach the Antenna

Connect the Antenna to the antenna connector located on the side of the device.

2 Connect Ethernet

Connect a Cat5 Ethernet cable between the device and an Ethernet port on a host computer.

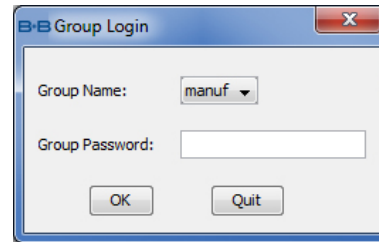
3 Connect Power Supply

Connect the 5-36 VDC terminal block attachment or use an AC power supply (optional).

4 Connect To The Device

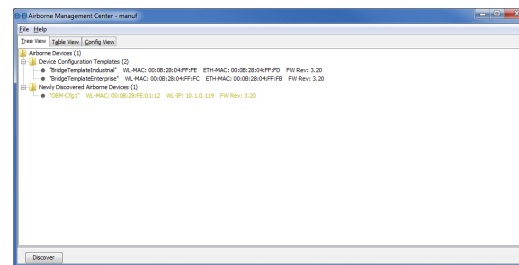
Run the Airborne Management Center (AMC) application. If you don't currently have AMC installed, you can install it from the included CD or download and install it from the B+B SmartWorx website. Just search for the model number and follow the links to download software from the Downloads section of the product page.

When AMC starts, it will request a login:



Select Group Name: "manuf" and enter Group Password: "dpac"

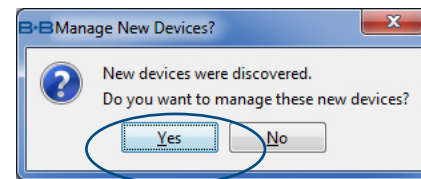
AMC will load and discover the attached device:



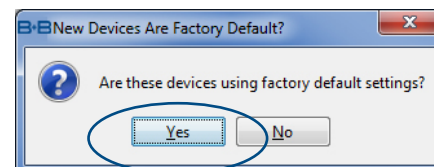
Note: You may be required to wait up to 180 seconds before the device is discovered and displayed.

5 Manage The Device

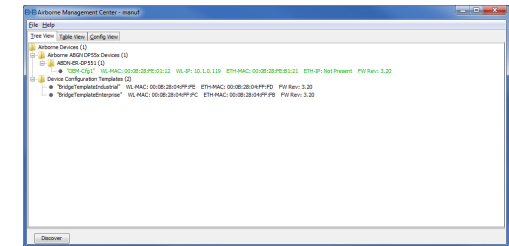
AMC will ask if you want to manage the new device, select 'Yes':



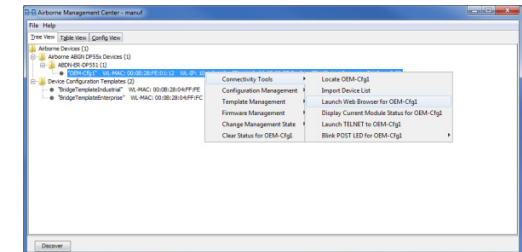
Select 'Yes' to indicate device is using Factory Default settings:



AMC will display the found Airborne device(s):



Right click the device's name. Under "Connectivity Tools" choose "launch Web browser for OEM-Cfg1." This will open the device's browser-based management window.

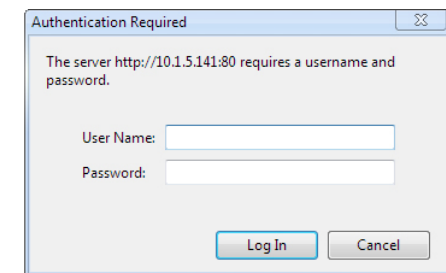


6 Configure Your Device

Login to web interface:

Username "dpac"

Password: "dpac"



Continue configuration via the Web interface. Start with the Configuration -> Express Setup page.



Note: Use the Help features of the interface to help you configure the device. When you are done configuring the device, press 'Commit' to save the changes, then 'Restart' to restart the device. You can optionally press 'Reload' if you have further configuration changes to make.

(Continued)