

# IOLAN SDS M

## Secure Serial to Ethernet Server with Integrated Modem

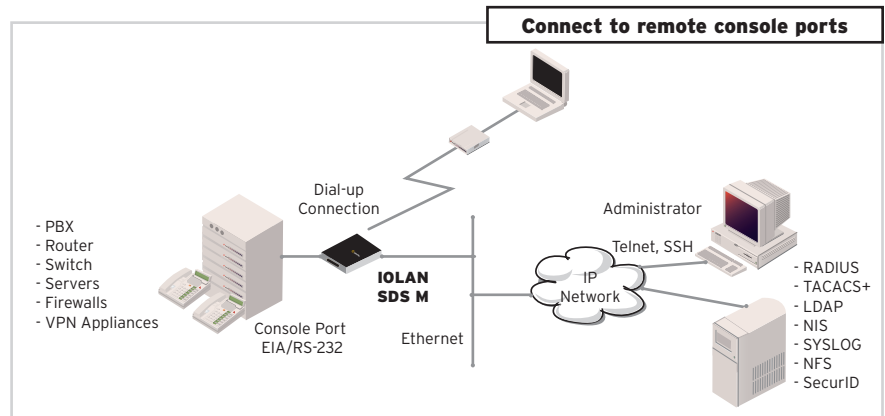
For serial to Ethernet connectivity applications, the IOLAN SDS M is the most advanced device server available. Delivering high performance in a compact size, an IOLAN SDS M offers extensive security, flexibility and next generation IP technology making it ideal for applications that require remote device/console management, data capture or monitoring over a dial-up modem connection.

### Secure Serial Connectivity

An IOLAN SDS M device server enables administrators to securely access remote serial console ports on equipment such as PBX, servers, routers, network storage equipment and security appliances through an IP network. Sensitive data such as credit card holder information is protected through standard encryption tools such as Secure Shell (SSH) and Secure Sockets Layer (SSL).

### Features and Benefits

- Available in 1 or 3 serial port models
- Software selectable EIA/RS-232/422/485 serial ports
- Integrated V.92/V.90 modem
- Data encryption over SSH, SSL or IPSec sessions
- Next Generation IP support ( IPv6 ) for investment protection and network compatibility
- Supports PPP dial-in for remote access applications
- High performance in a space saving compact size
- Port buffering for data capture and analysis - local, SYSLOG, NFS or encrypted NFS
- For console management applications, powerful authentication schemes prevent unauthorized access
- Protective solid steel enclosure
- DIN Rail mounting option for Industrial Automation applications
- RFC 2217
- Modbus to Modbus TCP
- Software Development Kit
- RoHS and WEEE compliant
- Perle Lifetime warranty for security and peace of mind



### Advanced IP Technology

With support for Next Generation IP ( IPv6 ), an IOLAN SDS M provides organizations with the investment protection today to meet the compatibility needs of networks tomorrow.

### Flexible and Reliable Serial to Ethernet Connections

An IOLAN SDS M is ideal for connecting serial based COM port, UDP or TCP socket based applications to remote devices. Perle's TruePort V5 re-director provides fixed TTY or COM ports to serial based applications enabling communication with remote devices connected to Perle device servers either in encrypted or clear text modes. You can also tunnel serial data between devices across an IP network.

Perle's Device Management software provides better centralized control of multiple units resulting in maximum uptime for your remote equipment.

Each IOLAN SDS M has added protection against electrostatic discharges and power surges with robust 15Kv ESD protection circuitry enabling organizations to utilize this solution in the field with confidence.

### Class Leading Support and Warranty

All Perle IOLAN SDS M models are backed by the best service and support in the industry including Perle's unique lifetime warranty. Since 1976 Perle has been providing its customers with networking products that have the highest levels of performance, flexibility and quality.

## Technical Specifications

### Processor

- MPC852T, 66 Mhz, 87 MIPS

### Network/Ethernet

- 1 x 10/100Mb RJ45

### Protocols

- IPv6, IPv4, TCP/IP, Reverse SSH, SSH, SSL, IPSec/IPv4, IPSec/IPv6, CIDR, RIPv2/MD5, ARP, RARP, UDP, UDP Multicast, ICMP, BOOTP, DHCP, TFTP, SNMP, Telnet, raw, Reverse Telnet, RFC 2217, LPD, RCP, DNS, Dynamic DNS, WINS, HTTP, HTTPS, SMTP, SNMPV3, PPP, PAP/CHAP, SLIP, CSLIP, Modbus/TCP, Modbus/RTU, Modbus/ASCII

### Security and Authentication

- SSHV1 and SSHV2
- SSL V3.0/TLS V1.0, SSL V2.0
- SSL Server and SSL client mode capability
- IPSec: NAT Traversal, ESP Authentication Protocol
- Encryption: AES (256/192/128), 3DES, DES, Blowfish, CAST128, ARCFOUR(RC4), ARCTWO(RC2)
- Hashing Algorithms: MD5, SHA-1, RIPEMD160, SHA1-96, and MD5-96
- Key exchange: RSA, EDH-RSA, EDH-DSS, ADH
- X.509 Certificate verification: RSA, DSA
- Certificate authority (CA) list
- Local database
- RADIUS Authentication and Accounting
- TACACS+, LDAP, NIS, Kerberos
- RSA SecureID-agent or via RADIUS
- IP Address filtering
- Disable unused daemons

### Management

- Web browser or secure web browser via https (SSL/TLS )
- Perle DeviceManager software to manage single or multiple device servers
- CLI – Telnet, SSH, shared console port
- IOLAN+ configuration mode
- SNMP, MIB II, Perle MIB, read and write capabilities
- SYSLOG
- Port Buffering – local, SYSLOG, NFS or 3DES encrypted to NFS server

### Serial Port(s)

- EIA-232/422/485 - software selectable
- Full modem and hardware flow control
- 50bps to 230Kbps for EIA-232
- RJ45 10 pin connector
- SUN Break Safe
- Full bidirectional modem support
- 15Kv ESD protection on all signals

### Modem Port

- RJ11 connector
- V.92/V.90 standard

### Interface Modes

- EIA-232 full duplex

### Indicators

- Power/Ready
- Network Link activity
- Serial: Transmit and Receive data LEDs

### Dimensions, Weight

- Dimension (L x W x H)
  - **SDS1 M**  
9.0 x 6.4 x 2.3 (cm), 3.5 x 2.5 x 0.9 (in)  
Weight – 0.22 kg (0.46 lbs)
  - **SDS3 M**  
11.2 x 8.1 x 2.6 (cm), 4.42 x 3.20 x 1.12 (in)  
Weight – 0.34 kg (0.75 lbs)

### Power

- 120 VAC (USA)
- 100-240 VAC (International)  
*External power adapter included with North American and International models*

### Fixed TTY/COM Port Emulation Software

- TruePort

### Environmental

- Operating temperature:  
0°C to 55°C, 32°F to 131°F
- Storage temperature:  
-40°C to 66°C, -40°F to 150°F

### Approvals

- FCC Part 15A, CE, CAN/CSA 22.2, UL 60950, EN 55022 Class A, EN 55024 Class A

### Warranty

- Limited lifetime warranty

Model	Features						Part Number		
	Ethernet	Serial Ports	Interface Type	Serial Connector	AC Adapter incl.	9-30V DC	USA	Europe	UK
IOLAN SDS1 M	10/100	1	EIA-232/422/485	RJ45-10	•	•	04030804	04030802	04030801
IOLAN SDS3 M	10/100	3	EIA-232/422/485	RJ45-10	•	•	04030824	04030822	04030821



[www.perle.com](http://www.perle.com)

Perle products are constantly reviewed and updated to meet customers' needs, as such specifications and capabilities are subject to change without notice. We endeavor to keep product descriptions as current as possible; for the latest up-to-date information, please visit our web site at [www.perle.com](http://www.perle.com). Perle is a registered trademark of Perle Systems. All other product names are trademarks of their respective holders. Copyright©Perle.