

NPort 5610-16, 5610-8

World's Leading LCM Display Rackmount Serial Device Server

Features

- **Easy-to-use LCM (Liquid Crystal Module) interface for setting up IP address**
- **Standard 19-inch rack-mountable**
- **Auto-detecting 10/100 Mbps Ethernet**
- **16/8 RS-232 ports**
- **Surge protection for all serial signals (15 KV ESD)**
- **Supports TCP Server, TCP Client, UDP, and Real COM Modes**
- **Supports web, telnet, console**
- **Supports SNMP MIB-II for network management**



Make up to 16 RS-232 Serial Devices Internet Ready

NPort 5610 provides a convenient and transparent way for Ethernet connection that not only protects your current hardware investment, but also ensures future network expandability. Perform some simple configuration tasks, and you'll be ready to network your existing serial devices.

Moreover, NPort 5610 can transparently transmit data bi-directionally between the serial and Ethernet interfaces. By using NPort 5610, you can centralize serial device management and distribute the management hosts at the same time.

19-in Rackmount Device Server

NPort 5610 has a professional cabinet design, with Tx/Rx LEDs for all ports on the front panel, and the 8/16 RS-232 RJ45 connectors on the rear panel. This makes NPort 5610

suitable for standard 19-inch rack mounting, simplifying operation, maintenance, and administration.

Real COM/TTY Port

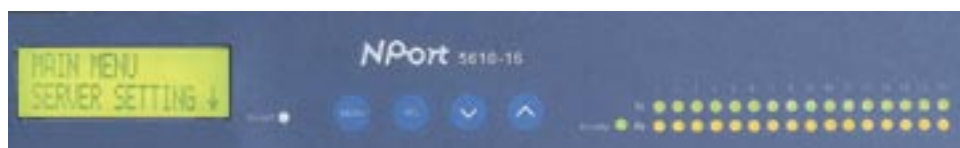
After installing the real COM/tty driver, which comes with NPort 5610, the serial ports on NPort 5610 are recognized as Real COM ports by the Windows operating system, or real

tty ports by Linux environments. NPort provides both the basic transmit/receive data functions, as well as RTS, CTS, DTR, DSR, and DCD control signals.

Useful LED Indicators

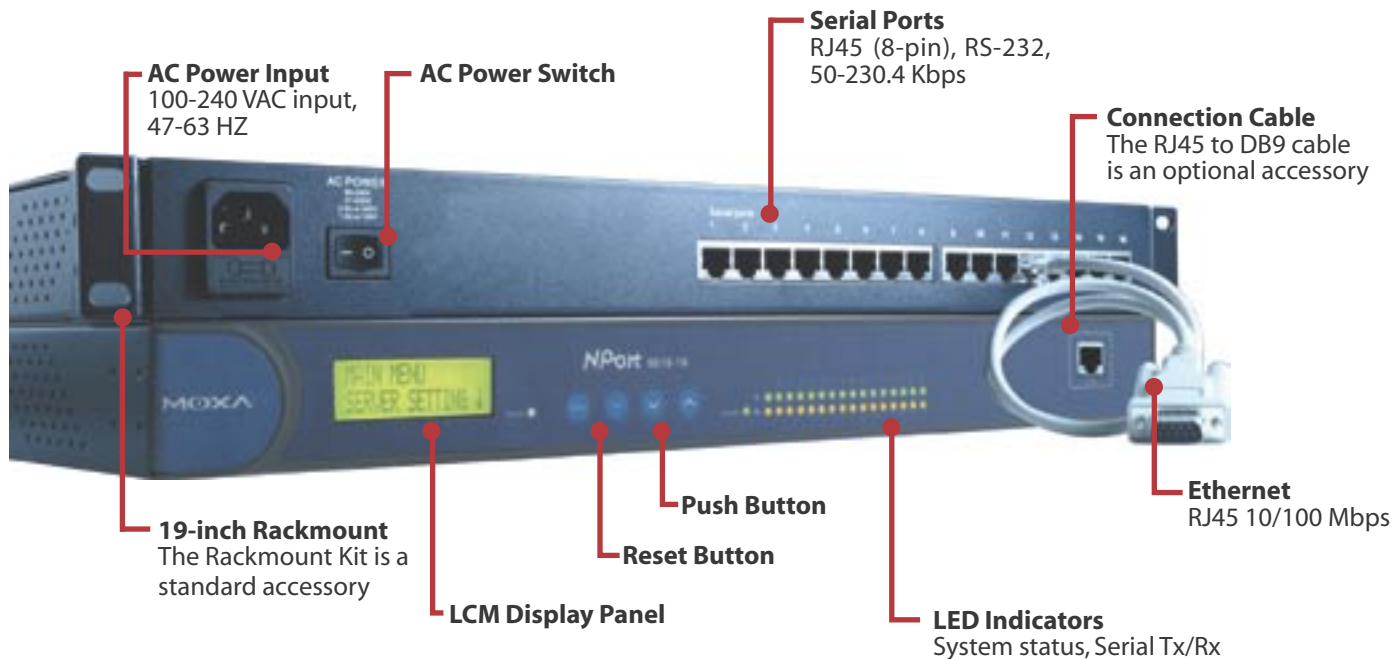
The System LED, Serial Tx/Rx LEDs, and Ethernet LED on the connector help field engineers analyze field problems, and provide a simple way to ease monitoring tasks. NPort

5610's LEDs not only indicate current system and network status, but also assist the field engineer in monitoring the status of attached serial devices.



16/8-Port RS-232 Rackmount Serial Device Server

Dimensions and Appearance

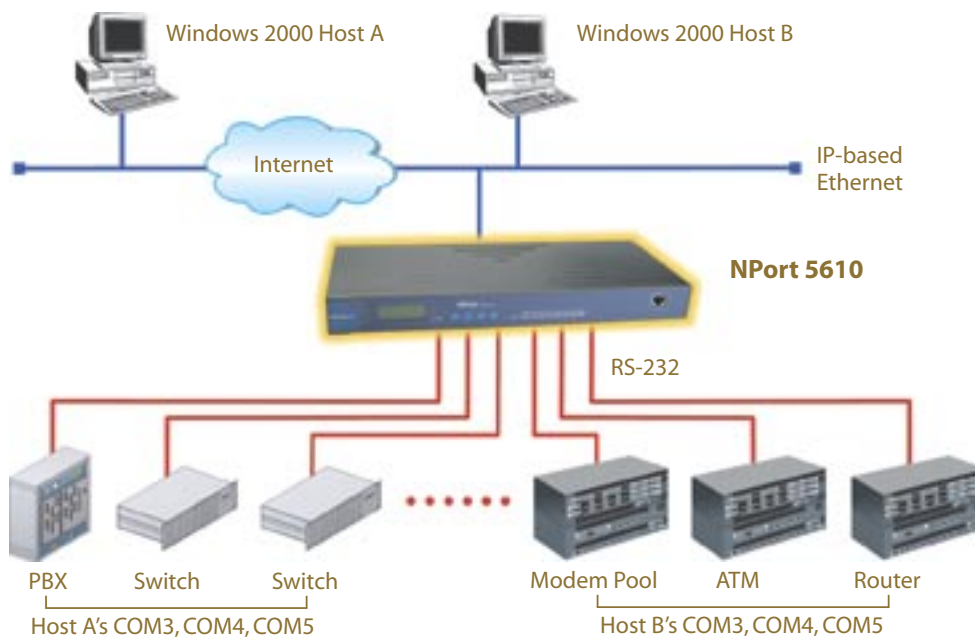


Typical Application

1 NPort 5610 can be shared by several different host computers

Different Host computers can share the same NPort 5610 to control different devices. For example, ports 1, 2, and 3 can be configured to Host A's COM3, COM4, and COM5, and ports 14, 15, and 16 can be configured to Host B's COM3, COM4, and COM5.

By using NPort 5610, you can simultaneously centralize serial device management and distribute the management hosts over the network.



16/8-Port RS-232 Rackmount Serial Device Server

Specifications

LAN

Ethernet: 10/100 Mbps, RJ45

Protection: Built-in 1.5 KV magnetic isolation

Serial

Interface: RS-232, RJ45 8-pin

RS-232: TxD, RxD, RTS, CTS, DTR, DSR, GND

Serial line protection: 15 KV ESD for all signals

Power Line protection:

4 KV Burst (EFT), EN61000-4-4

2 KV Surge, EN61000-4-5

Built-in HMI

LCM display with four push buttons

Built-in Buzzer

Built-in Real Time Clock

Built-in Watch Dog Timer

Serial Communication Parameters

Parity: None, Even, Odd, Space, Mark

Data bits: 5, 6, 7, 8

Stop bit: 1, 1.5, 2

Flow control: RTS/CTS, XON/XOFF

Speed: 50 bps to 230.4 Kbps

Software Features

Protocols: ICMP, IP, TCP, UDP, DHCP, BootP, Telnet, DNS, SNMP, HTTP, SMTP, Sntp

Utilities: NPort Administrator for Windows 95/98/ME/NT/2000/XP

Real COM/TTY drivers: Windows 95/98/ME/NT/2000/XP Real COM drivers, Linux real tty driver

Configuration: Web browser, telnet console, or Windows utility

Power Requirements

Power Input: 100 to 240 VAC, 47 to 63 Hz, or 48 VDC

Power Consumption:

5610-8: 8.2 W

5610-16: 9.6 W

5610-8-48V: 170 mA (at 48V max.)

5610-16-48V: 200 mA (at 48V max.)

Mechanical Specifications

Material: SECC sheet metal (1 mm)

Environmental

Operating Temperature:

0 to 55°C (32 to 131°F), 5 to 95% RH

Storage Temperature:

-20 to 85°C (-4 to 185°F), 5 to 95% RH

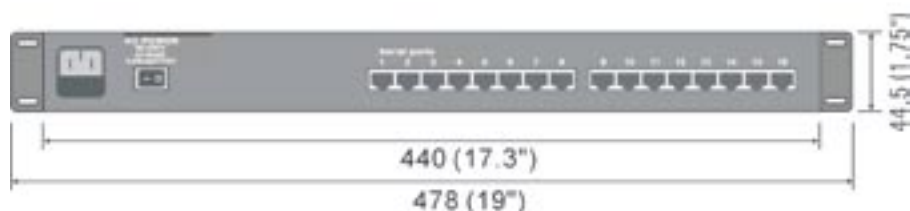
Regulatory Approvals

EMC: FCC Class A, CE Class A

Safety: UL, CUL, TÜV

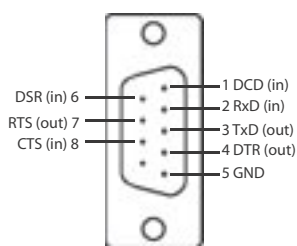
Dimensions

Unit: mm (inch)

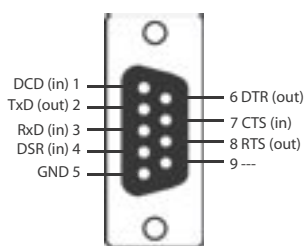


Pin Assignment

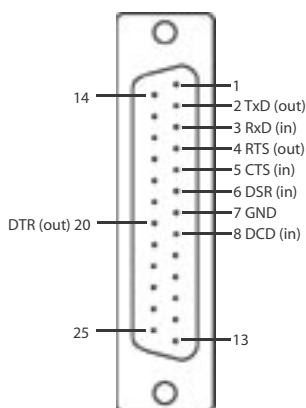
CBL-RJ45M9-150



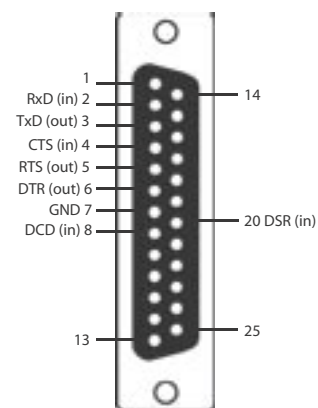
CBL-RJ45F9-150



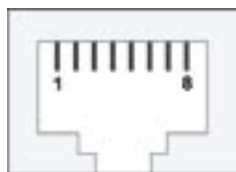
CBL-RJ45M25-150



CBL-RJ45F25-150



RJ45 RS-232 port pin assignment



Pin	RS-232
1	DSR (in)
2	RTS (out)
3	GND
4	TxD (out)
5	RxD (in)
6	DCD (in)
7	CTS (in)
8	DTR (out)

Ordering Information

NPort 5610-16:

16-Port RS-232 Serial Device Server,
100-240 VAC power input

NPort 5610-8:

8-Port RS-232 Serial Device Server,
100-240 VAC power input

Above items include:

- 1 serial device server
- Quick Installation Guide
- NPort Document and Software CD-ROM
- Power Cord

Optional Accessories

- CBL-RJ45M9-150:** RJ45 8-pin to DB9 Male cable, 150 cm
- CBL-RJ45F9-150:** RJ45 8-pin to DB9 Female cable, 150 cm
- CBL-RJ45M25-150:** RJ45 8-pin to DB25 Male cable, 150 cm
- CBL-RJ45F25-150:** RJ45 8-pin to DB25 Female cable, 150 cm

NPort 5610-16-48V:

16-Port RS-232 Serial Device Server,
48 VDC power input

NPort 5610-8-48V:

8-Port RS-232 Serial Device Server,
48 VDC power input

Above Items include:

- 1 serial device server
- Quick Installation Guide
- NPort Document and Software CD-ROM