

WISE-2410

Smart Vibration Sensor Startup Manual

Overview

Thank you for purchasing the WISE-2410 module. This quick start guide is intended to help you deploy your new module. The guide contains basic information on the power and application wiring.

Should you require additional instructions, please refer to the user manual.

Input Power Requirements

The WISE-2410 is designed for two AA 3.6VDC batteries as an power source.

Packaging List

- 1 x WISE-2410 module
 - 1 x Quick start manual
 - 1 x Mounting stud
 - 1 x China RoHS declaration (UA series only)
- *AA 3.6VDC batteries should be ordered respectively.

For more information on this and other Advantech products, please visit our website at:

<http://www.advantech.com>

For technical support and service:

<https://www.advantech.com/support/>

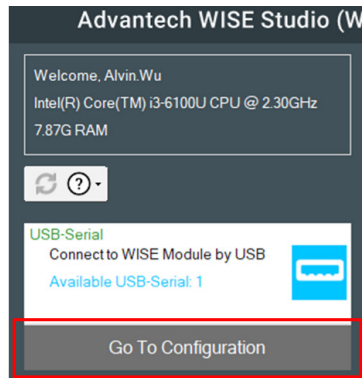
This startup manual is for WISE-2410.

Part No. 2043241002
Printed in Taiwan

3rd Edition
Oct 2020

Quick Start

1. Connect the module to your computer via the micro-USB port.
2. Open WISE Studio and press **Go To Configuration**.

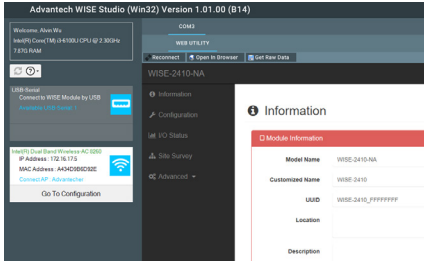


3. Click **Connect** to link the WISE-2410 and the web configuration page will appear.

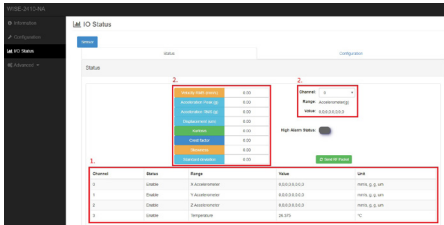


Quick Start

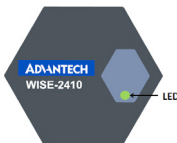
- Use the web configuration in WISE Utility or press **Open In Browser** to open the web configuration in any browser (Google Chrome is recommended).



- Click **Information** to check the status of the module or to configure the module.
- Click **IO Status** to check vibration and temperature data.
 - Users can easily see the details of all channels
 - Users can choose channel 0,1,2,3 which means x, y, z axis to see the detailed vibration features (velocity RMS, acceleration peak - a total of eight features).



LED Indicators



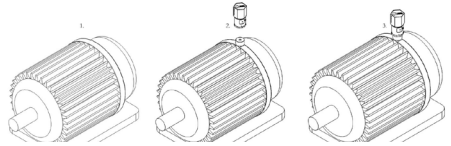
LED Indication	LED	Colour	Behaviour	Description
	Status	Green	On	Indicates power is on; the light turns off after three seconds

Notes

- USB is only for configuration.

Caution

- Precision Instrument Inside, please handle with care.
- The magnetic metal base needs to be fixed on the DUT first, WISE-2410 locks on the second.



- Make sure WISE-2410 is covered by EVA foam in the storage environment.
- To prevent damage to the sensor, tensile stresses must be avoided under all conditions.

Battery Replacement

- Remove top chassis
- Grab the mylar and disconnect the connection between battery holder and PCBA
- Take out the battery holder and plug in new batteries. Please make sure the batteries are both in the right anode and cathode position.
- Plug in the battery pack and make sure the cable is hidden between the PCBA and the battery pack.
- Make the connection between battery holder and PCBA. Please make sure the cable has crossed by the dent which is on the right side of the PCBA

