

WISE-4210

Industrial LPWAN SUB-G Wireless I/O Module

Startup Manual

Overview

Thank you for purchasing the WISE-4210 module. This quick start guide is intended to help you deploy your new module. The guide contains basic information on the power and application wiring.

Should you require additional instructions, please refer to the user manual.

Input Power Requirements

The WISE-4210 is designed for a standard industrial unregulated 24 V_{DC} power supply. For some applications, it can also accept +10 to +50 V_{DC} power input with 200 mV peak-to-peak power ripple. The immediate ripple voltage should be between +10 and +50 V_{DC}. Batteries may also be used as an alternative power source.

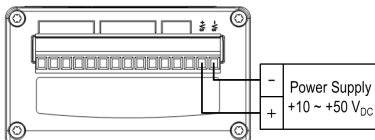
Packaging List

- 1 x WISE-4210 module
- 1 x Mounting bracket
- 1 x Quick start manual
- 1 x China RoHS declaration (UA series only)
- 1 x Antenna (UA series only)*

*For NA series, antennas should be ordered respectively per required frequency range

** WISE-S200 I/O module should be ordered respectively

Power Supply Wiring



For more information on this and other Advantech products, please visit our website at:

<http://www.advantech.com>

For technical support and service:

<https://www.advantech.com/support/>

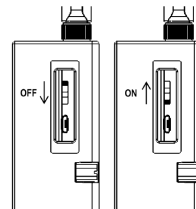
This startup manual is for WISE-4210.

Part No. 2003421052
Printed in Taiwan

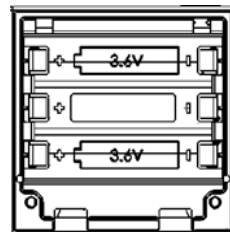
Edition 3
October 2019

Battery

Open the rubber cover on the side of WISE-4210 nodes, there is a battery switch to turn on or turn off the battery power supply.



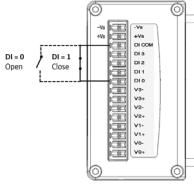
The module accepts 3 x AA, 3.6 V lithium battery. The batteries should be installed facing the same direction.



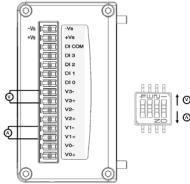
Application Wiring

WISE-S214 (4AI/4DI)

Digital Input- Dry Contact

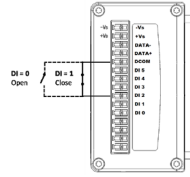


Analog Input

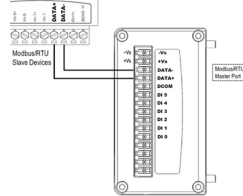


WISE-S251 (6DI/1RS-485)

Digital Input – Dry Contact

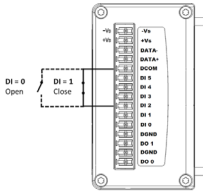


RS-485 Port

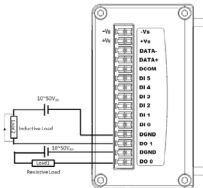


WISE-S250 (6DI/2DO/1RS-485)

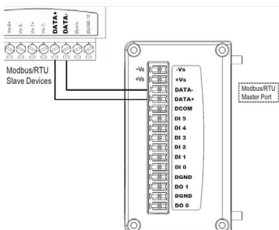
Digital Input-Dry Contact



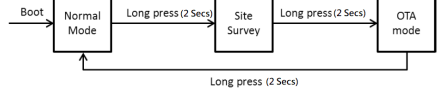
Digital Output



RS-485 Port



Membrane Button



Normal Mode	Mode	Light Press (0.5 Sec)	Long Press (2 Secs)
	Power Saving Mode	LED turns on → Gets battery level → LED turns off*	Leave normal mode
	Non-power Saving Mode	Get battery level → LED turns off*	Leave normal mode

Site - Survey Mode	Light Press (0.5 Sec)	Long Press (2 Secs)
	Tx site survey packet	Leave site survey mode

OTA Mode	Status	Light Press (0.5 Sec)	Long Press (2 Secs)
	Rx Status	Read battery level	Leave OTA mode
	Tx Status (by USB port)	Tx Configuration	Tx Firmware
	Low Battery	NA	Leave OTA mode
	Update FW fail	Reset OTA mode	NA

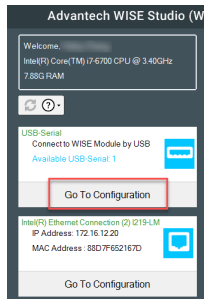
*LED indicators will go off automatically 15 secs later when using battery power

Notes

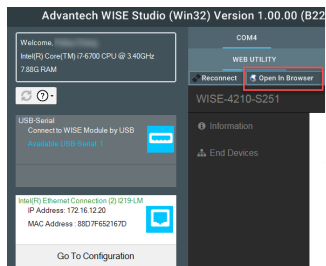
1. Please install the CP210x USB to UART Controller driver: <https://www.silabs.com/products/development-tools/software/usb-to-uart-bridge-vcp-drivers>.
2. The power from USB is not sufficient to power WISE-4210 module. Please plug in a DC power source from +Vs and -Vs pin.

Quick Start

1. Plug in a DC power source to the +Vs and -Vs pins of your module or insert charged batteries
2. Connect the module to your computer via the micro-USB port
3. Open WISE Studio and press **Go To Configuration**

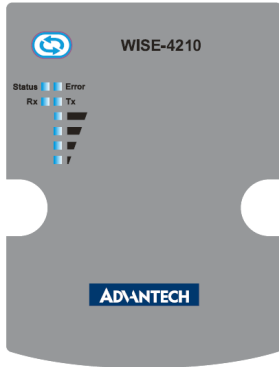


4. Click **Connect** to link WISE-4210 - the web configuration page will appear
5. Use the web configuration in WISE Utility or press **Open In Browser** to open the web configuration page in any browser (Google Chrome is recommended)



6. Click **Information** to check the status of the module or to configure the module

LED Indicators



	Indication (Green)	Percentage
Battery Level	4	100%
	3	100~50%
Battery PN: 1760002647-01	2	50~30%
	1	30~0%

LED	Color	Indication	Behavior
Status	Green	Blink	2 Hz: Initial Status 0.5 Hz: Node is connected and normally at work (Automatically goes OFF after 15 seconds when battery power is used)
		On	Site Survey mode
		OFF	OTA mode (RF RX or RF TX on)
RF RX	Green	On(at least 10 ms)	Receiving data from the Gateway
		On	Listen RF channel
		Off	Idle
RF TX	Yellow	On(at least 10 ms)	Sending data to the Gateway (Automatically disabled after 15 seconds when battery power is used)
		Off	Idle
Error	Red	Fast Blink	<ul style="list-style-type: none"> I/O Error OTA Fail TX/RX Firmware fail in OTA
		Slow Blink	<ul style="list-style-type: none"> Low battery voltage Low RTC battery voltage
		Off	No error
Signal 4	Green	Fast Blink	<ul style="list-style-type: none"> RF related error
Signal 3	Green	Fast Blink	<ul style="list-style-type: none"> I/O error
Signal Strength	Green	On * 4	<ul style="list-style-type: none"> Full signal (In site survey mode) Battery level (100%) (Automatically goes OFF after 15 seconds when battery power is used)
		On * 3	<ul style="list-style-type: none"> Good signal (In site survey mode) Battery level (100~50%) (same as above)
		On * 2	<ul style="list-style-type: none"> Okay signal Battery level (50~30%) (same as above)
		On * 1	<ul style="list-style-type: none"> Poor signal Battery level (30~0%) (same as above)
		All Off	<ul style="list-style-type: none"> No signal Battery level (0%)