

ERT/Ethernet Gateway

Certified Itron ERT® Radio-to-IP Gateway

Gateway supports IP-to-application connectivity with utility meters that are enabled with Itron's ERT wireless meter reading technology.

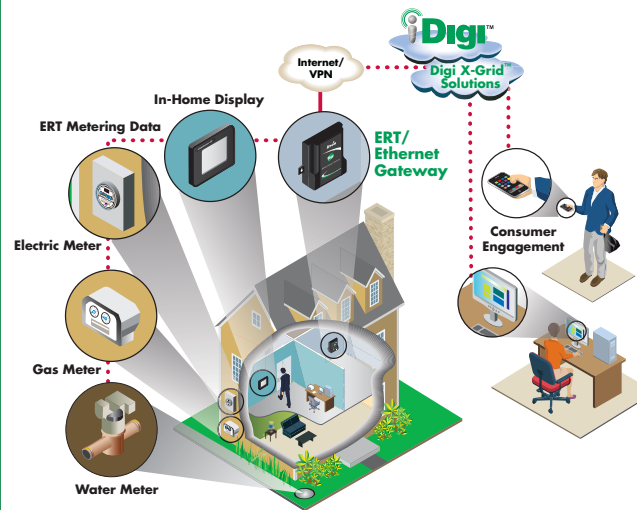


Overview

Digi's ERT/Ethernet Gateway brings Smart Grid technology to the millions of utility customers who use meters that are enabled with Itron ERT radio technology. The integrated certified Itron ERT radio receiver enables metering data to be shared with the software application from the utility, energy service provider or consumer via the homeowners' networking/IP connection to the Internet. Data can be dynamically analyzed and presented to the customer and help identify areas to optimize energy use. This information exchange is critical for the goal of initiating lifestyle changes that can reduce user consumption of energy resources while still maintaining a high quality of service to the customer.

The ERT/Ethernet Gateway can also go beyond the hardware solution when it is combined with Digi X-Grid™ services, which include iDigi® cloud services. By leveraging the robust, secure and scalable iDigi® Device Cloud™ for serving data, utility service providers can focus on developing a software application layer that can be unique and customizable to the Smart Energy solution that best serves their customers' needs.

Digi X-Grid Solution



Features/Benefits

- Certified ERT radio design used under Itron ERT license with support for all ERT "bubble-up" utility meters
- Supports multi-family housing and meter banks of up to 10 ERT meters with secure, encrypted data transmission
- 10/100 Ethernet for fast, secure networking
- Python® extensible firmware, with support for remote firmware upgrades and future standards development
- Supports iDigi platform providing robust, secure, scalable management services that easily connects with the energy service provider's application software
- APIs available for custom software development

Related Products



iDigi Solutions



SE Gateways



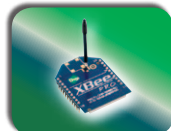
SE Range Extenders



Dev Kits



Cellular Gateways



SE Ready Modules



General	
Management	Secure enterprise management via iDigi® cloud services
Protocols	UDP/TCP, DHCP, SNMPv3, IPv4, ICMP, DNS
LEDs	Power, Ethernet status, ERT status
Security/Encryption	SSL/TLS tunnels with AES 128-bit encryption
ERT Receiver	Receive up to 10 ERT devices simultaneously
ERT Performance	Performance attributes certified under official Itron ERT Certification Program
Dimensions (L x W x H)	2.81 in x 2.74 in x 1.30 in (7.14 cm x 6.96 cm x 3.30 cm)
Weight	0.20 lb (0.09 kg) (approximate)
Development	
Python Version	2.4.3
Memory (User-available memory varies by firmware and OS version)	4 MB Flash, 8 MB RAM
Ethernet	
Ports	1 RJ-45 port
Physical Layer	10/100Base-T
Data Rate	10/100 Mbps (auto-sensing)
Mode	Full or half duplex (auto-sensing)
Power Requirements	
Power Input	5 VDC
Power Supply	5 VDC power supply with barrel connector included
Power Consumption	Typical 3.0 W
Environmental	
Operating Temperature	0° C to + 40° C, (32° F to 104° F)
Relative Humidity	5% to 90% (non-condensing)
Ethernet Isolation	1500VAC min per IEEE802.3/ANSI X3.263
Regulatory Approvals	
Emissions/Immunity	FCC Part 15 (Class B)

Visit www.digi.com for part numbers.

DIGI SERVICE AND SUPPORT - You can purchase with confidence knowing that Digi is here to support you with expert technical support and a strong five-year warranty. www.digi.com/support

**Digi International
Worldwide HQ**

877-912-3444
952-912-3444

**Digi International
France**

+33-1-55-61-98-98
www.digi.fr

**Digi International
Japan**

+81-3-5428-0261
www.digi-intl.co.jp

**Digi International
India**

+91-80-4287-9887

**Digi International
Singapore**

+65-6213-5380

**Digi International
China**

+86-21-5150-6898
www.digi.cn



91001639
82/1211

BUY ONLINE • www.digi.com

© 2010-2011 Digi International Inc.
All rights reserved. Digi, Digi International, the Digi logo, the Making Wireless M2M Easy logo, Digi X-Grid, iDigi and iDigi Device Cloud are trademarks or registered trademarks of Digi International Inc. in the United States and other countries worldwide. All other trademarks are the property of their respective owners. All information provided is subject to change without notice.

info@digi.com

