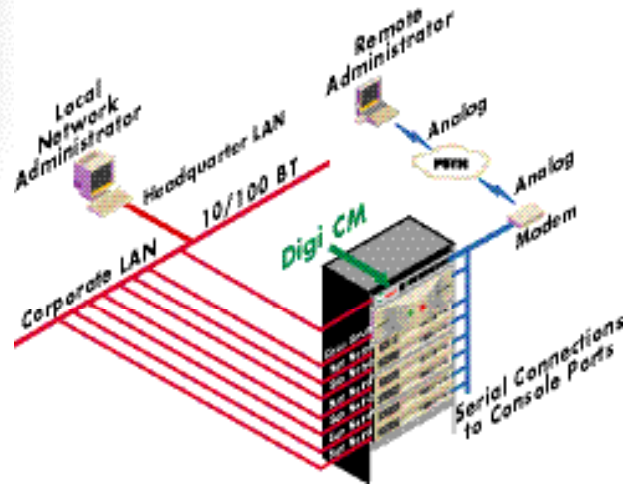


Digi CM™

Console Server

Secure out-of-band management for UNIX servers, Cisco routers and Windows Server 2003 systems.



Features/Benefits

- > Sun, Cisco, IBM, HP, Unix, Linux and Microsoft Windows Server 2003 compatible
- > SSH v2 for secure access
- > Out-of-band management
- > 1U rack-mountable for better co-location with network hardware
- > Secure clustering up to 544 devices
- > Port buffering/logging
- > Solaris Ready
- > Auto-Alert
- > RADIUS, TACACS+, Kerberos and LDAP Authentication
- > CAT 5 Cabling
- > PC Card slot

Overview

With Digi CM™, administrators can securely monitor and control servers, routers, switches and other network devices from anywhere on the corporate TCP/IP network, over the Internet, or through dial-up modem connections, even when the server is unavailable through the network.

Digi CM employs SSHv2 encryption, to keep server access passwords safe from hackers, and supports all popular SSH clients, as well as secure access from any Java-enabled browser.

NEW: *Digi CM is the first console server to provide a secure graphical user interface for easy out-of-band management of Microsoft Windows Server 2003 systems.*

Digi CM connects to serial console ports using standard CAT5 cables, eliminating the hassles of custom cabling. In addition, the Digi CM offers a PCMCIA card slot, for adding dialup modems or wireless network cards. Flash memory cards can be used to save port logs and backup configuration files.

Digi CM is available in 8-, 16-, 32- and 48-port models, in a 1U rack-mount form factor.

Test drive the Digi CM today at: www.digi.com/cmdemo



Connectware™

www.digi.com

Making
DEVICE NETWORKING
easy™

Features/Specifications

FEATURES

- Security
 - SSH v2 server and client
 - SSL
 - IP Filtering
- Authentication
 - TACACS+
 - RADIUS w/SSH
 - LDAP
 - Kerberos
 - User access per port
 - Local user database
- Management
 - Command line
 - WEB – HTTP/HTTPS
 - SNMP
 - Custom applications
 - Port Triggers and Alerts
 - Multi level menuing
 - Auto-discovery
- Data capture
 - Port buffering
 - Logging (syslog,NFS, PC card)
- Port access
 - Telnet/SSH with menuing
 - Reverse Telnet/SSH
 - HTTP/HTTPS
- Additional protocols supported
 - DHCP
- Solaris Ready
- Multiple users per port
- Flash upgradeable
- LEDs – 3 per serial port, 5 Ethernet, 1 CPU
- SSH sessions simultaneously on all ports
- Secure Clustering - Single IP for multiple Digi CM devices
- IP addresses per port

POWER REQUIREMENTS

- Digi CM 16/32/48:**
- Internal 100-240 VAC,50/60 Hz, 40W max,12W typical
 - Power supply MTBF, 11 years
 - -48 VDC versions
- Digi CM 8:**
- External 100-240 VAC,50/60 Hz, 12W max,6W typical

CONNECTORS

- 8,16,32 or 48 RJ-45 EIA-232 serial ports
- One RJ-45 EIA-232 console port
- One RJ-45 10/100Base-T Ethernet port

OPERATING SYSTEMS

- Emdded Linux (Hard Hat Distribution) <http://ftp.digi.com/support.firmware/digicm/>

ADDITIONAL PC CARDS

- CompactFlash memory card
 - Wireless LAN adapter (802.11b)
 - Ethernet LAN adapter
 - PSTN/CDMA modem card
- See <http://cm.digi.com> for more information

ENVIRONMENTAL

- Ambient temperature (operating): 5°C to 50°C (41°F to 122°F)
- Storage temperature: (non-operating) -30°C to 60°C (-20°F to 140°F)

MEMORY

- 64MB SDRAM
- 8MB Flash

REGULATORY APPROVALS

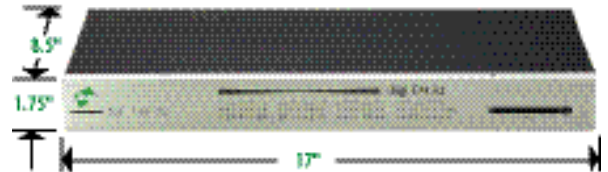
- FCC Part 15, A
- UL 1950
- EN55022, A
- EN55024

DIMENSIONS

- Length:17 in.(43.2 cm)
- Depth:1.75 in.(4.5 cm)
- Width:8.5 in.(21.6 cm)
- Weight:5.8 lbs. (2.6 kg)

MODEL PART NUMBERS

Model	North America	International
Digi CM 8	70001931	70001932
Digi CM 16	70001910	70001911
Digi CM 32	70001908	70001909
Digi CM48 (coming soon)	TBD	TBD
Cable Adapters		
Digi CM DB-25M Modem Adapter (8/pack)	76000670	76000670
Digi CM DB-9F Console Adapter (8/pack)	76000671	76000671
Digi CM DB-25M Console Adapter (8/pack)	76000672	76000672
Digi CM DB-25F Console Adapter (8/pack)	76000673	76000673



DIGI SERVICE AND SUPPORT

You can purchase with confidence knowing that Digi is here to support you with expert technical support and a strong five-year warranty. <http://support.digi.com>

Digi International
11001 Bren Road E.
Minnetonka, MN 55343
U.S.A.
PH: 877-912-3444
952-912-3444
FX: 952-912-4952

Digi International GmbH
Joseph-von-Fraunhofer Str. 23
D-44227 Dortmund
Germany
PH: +49-231-9747-0
FX: +49-231-9747-111

Digi International (HK) Limited
Suite 1101-02, 11/F
K Wah Centre
191 Java Road
North Point, Hong Kong
PH: +852-2833-1008
FX: +852-2572-9989

www.digi.com

email:
info@digi.com

